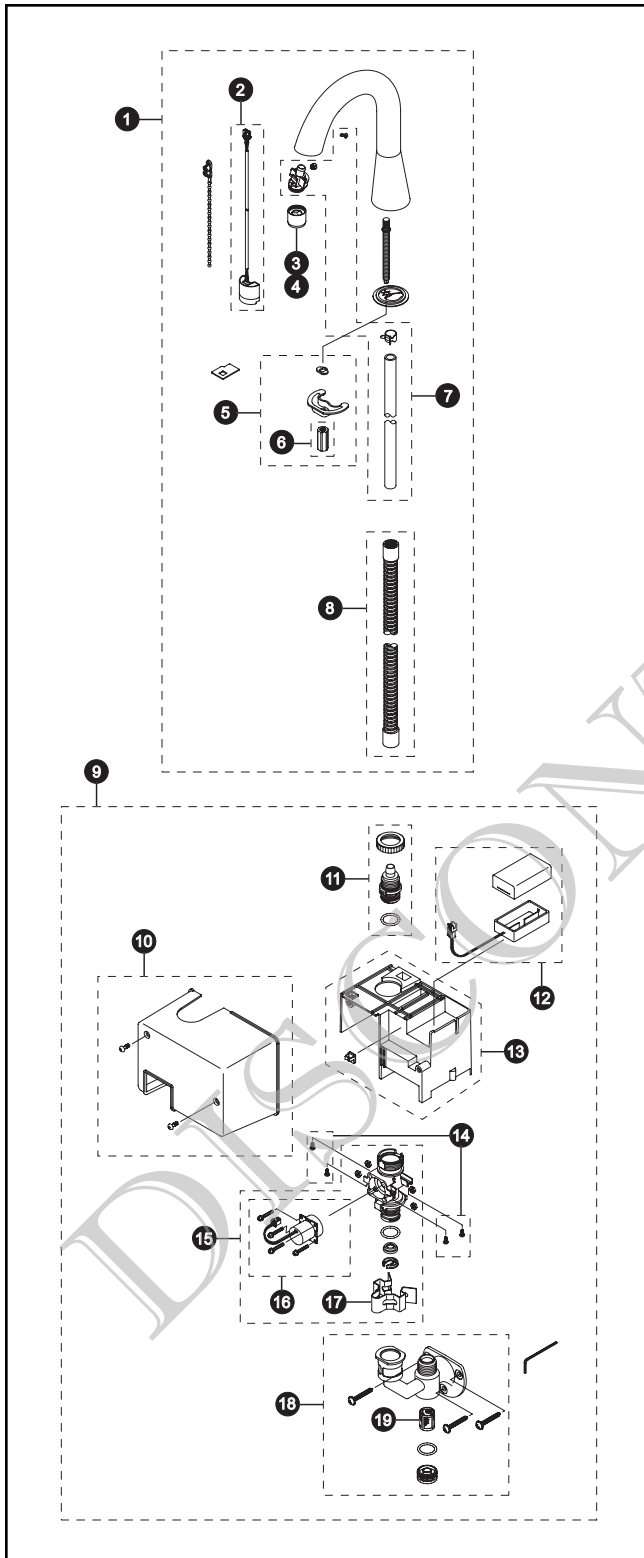


TEL3DGC-60
 TEL76GV100 (Spout)
 TN78-9V160 (Control Box)

**Sensor Faucet, Gooseneck Spout
 Battery Powered (3V, DC)
 Single Supply**



Item	Part	Description
1	TEL76GV100	Spout Assembly
2	TH559EDV405	Sensor
3	TH559EDV401	Nozzle Assembly Set (Aerator Flow Type)
4	TH559EDV432	Nozzle Assembly Set (Laminar Flow Type)
5	TH559EDV402	Spout Mounting Kit
6	TH559EDV403	Spout Nuts (Gooseneck and Regular)(5 pieces)
7	TH559EDV406	Nozzle Bushing Set
8	TH559EDV404	Flexible Tube (Regular Spout)
9	TN78-9V160	Control Box Assembly
10	TH559EDV422	Control Cover
11	TH559EDV420	Bushing Assembly
12	TH559EDV421	Battery Case
13	TH559EDV419	Single Battery Control Unit 60 sec.
14	TH559EDV416	Screws (10 Pieces)
15	TH559EDV412	Valve Assembly Unit
16	TH559EDV413	Solenoid and Diaphragm Assembly
17	TH559EDV255	Metal Spring Clip
18	TH559EDV415	Mounting Bracket Set
19	TH559EDV256	Metal Strainer Screen
20	TN71V100	Cover Plate - 4". Use TN71V100R."
21	71244T8CC	Cover Plate - 8"

Product Number Explanations

- Faucet**
 (T) Fitting
 (E) Electronic
 (L) Lavatory
 (3) Single Supply
 (D) DC Type
 (G) Gooseneck Spout
 (C) Chrome Finish
 (60) 60 Second