

To be specified:

**Sensor Urinal Flush Valve**

- Valve Only, Nickel Chrome Plated Finish
  - Left and Right Rough - TEU1DNCS
- Complete Set, Nickel Chrome Plated Finish
  - Left and Right Rough - TEU1DNCS-12 (3/4" V.B.)
  - Left and Right Rough - TEU1DNCS-22 (1 1/4" V.B.)

Complete set supplied with:

- Vacuum Breaker & Angle Stop Set - VB9CP-12
  - 3/4" Angle Stop - 10077t4
  - 3/4" Vacuum Breaker - 10075t2
  - Spud Nut & Escutcheon - 71051Nt5
  - Sweat Solder Kit - TH559EDVSJ1
- Vacuum Breaker & Angle Stop Set - VB9CP-22
  - 3/4" Angle Stop - 10077t4
  - 1 1/4" Vacuum Breaker - 10075t5
  - Spud Nut & Escutcheon - 71051Nt7
  - Sweat Solder Kit - TH559EDVSJ1

*Meets the American disability Act Guidelines and ANSI A117.1 requirements for people with disabilities.*



4 AA Batteries Included

TEU1DNCS-12

### AUTOMATIC FLUSHING SYSTEM

TOTO, the world leader in advanced plumbing systems, provides sensor operated flush valves for facilities demanding the finest sanitation equipment for busy restrooms. "Hands-free" technology effectively reduces unsanitary conditions from unflushed fixtures.

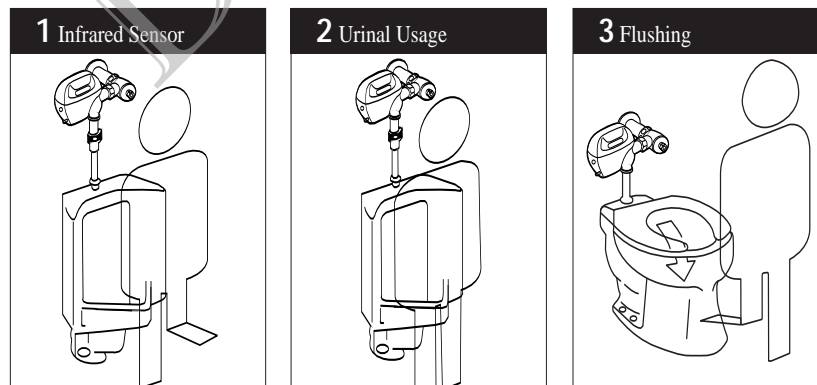
### SUPERIOR PISTON VALVE

TOTO's piston valve technology is a marked improvement over traditional rubber diaphragm type valves. Longer piston travel and self-cleaning debris screen reduce common problems such as continuous running and flooding. The piston seat itself will not warp or mis-seal thus, significantly reducing repair and maintenance costs. A micro-porous cup seal keeps the piston self-lubricated upon each activation with the incoming water supply.

### FUZZY LOGIC MICROPROCESSOR

"Fuzzy logic" controlled flushing offers the ultimate water conservation without sacrificing performance. The new TOTO urinal flush valves utilize a fuzzy logic control microprocessor which measures the duration and frequency of use, and flushes an appropriate volume (0.5 – 1.0 gpf). In facilities with periods of frequent use, water conservation is maximized with the use of fuzzy logic technology.

### OPERATING PROCEDURE A sanitary environment without using the hands.




### NEUTRAL ROUGH-IN

TOTO's sensor flush valve has a neutral rough-in, it can be used as a right or left hand rough-in without modifications.



# Battery Powered (6V, DC) Sensor Urinal Flush Valve, Exposed - 1.0 GPF

## SPECIFICATIONS

<b>Product</b>	TEUIDNCS–Valve Only, Left and Right Rough, Chrome Plated Finish TEUIDNCS–12 – Complete Set (3/4" V.B.), Left and Right Rough, Chrome Plate Finish TEUIDNCS –22 –Complete Set (1-1/4" V.B.), Left and Right Rough, Chrome Plated Finish
<b>Power supply</b>	Four AA alkaline batteries, 2-year life, based on 4000 cycles per month
<b>Detection range</b>	Self-adjusting to environment
<b>Detection time</b>	Factory setting at six (6) seconds minimum
<b>Water supply pipe</b>	3/4" NPT
<b>Discharge quantity</b>	Fuzzy logic adjusted flush volume at 28psi (0.5-1.0 GPF)
<b>Urinal type</b>	Low consumption wash down and jetted flush design urinals
<b>Trap seal protection</b>	Automatic flushing once every twenty-four (24) hours, if not used
<b>Ambient temperature</b>	33°-104°F (1°-40°C)
<b>Supply water pressure</b>	15 psi - 100 psi*
<b>Warranty</b>	Limited three (3) year warranty on all component parts. Details available upon request.
<b>Listings</b>	 ASSE 1037

These dimensions and specifications are subject to change without notice.

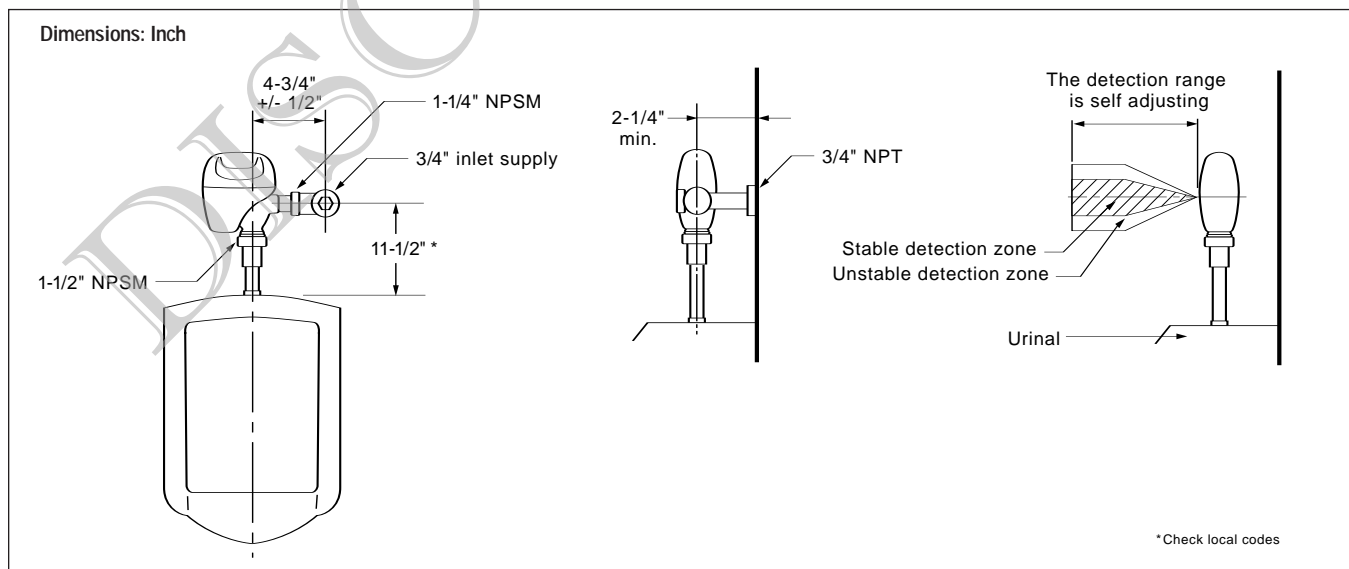
\*Water pressures over 80 psi are not recommended for most plumbing fixtures.

## SUGGESTED ENGINEERING SPECIFICATION:

TOTO Model No. \_\_\_\_\_  
Automatic infrared sensor activated, piston operated toilet flush valve. Heavy-duty zinc die cast cover with nickel-chrome finish. Vandal resistant hex head screws. 1.0 gpf. Four AA alkaline batteries included providing a

2-year life at 4,000 cycles/month.  
Piston valve and solenoid with self-cleaning mechanism.  
Automatic flush every twenty four hours if not used.  
Angle stop and vacuum breaker included with accessories.

## DIAGRAM:



**TOTO®**

TOTO U.S.A., INC. • 1155 Southern Road, Morrow, GA 30260  
Tel. (770) 282-8686 • Fax. (770) 282-8701 • www.totousa.com  
Printed in U.S.A. © TOTO LTD. 08/05

Printed on recycled paper 

REV 08/05