

TOTO®

Perfection by Design

Battery Powered (6V, DC) Sensor Urinal Flush Valve, Exposed - 1.0 GPF

To be specified:

Sensor Urinal Flush Valve

- Valve Only, Nickel Chrome Plated Finish
 - Left and Right Rough - TEU1DNCR
- Complete Set, Nickel Chrome Plated Finish
 - Left and Right Rough - TEU1DNCR-12 (3/4" V.B.)
 - Left and Right Rough - TEU1DNCR-22 (1 1/4" V.B.)

Complete set supplied with:

- Vacuum Breaker & Angle Stop Set - VB9CP-12
 - 3/4" Angle Stop - 10077t4
 - 3/4" Vacuum Breaker - 10075t2
 - Spud Nut & Escutcheon - 71051Nt5
 - Sweat Solder Kit - TH559EDVSI1
- Vacuum Breaker & Angle Stop Set - VB9CP-22
 - 3/4" Angle Stop - 10077t4
 - 1 1/4" Vacuum Breaker - 10075t5
 - Spud Nut & Escutcheon - 71051Nt7
 - Sweat Solder Kit - TH559EDVSI1

Meets the American disability Act Guidelines and ANSI A117.1 requirements for people with disabilities.



TEU1DNCR-12

AUTOMATIC FLUSHING SYSTEM

TOTO, the world leader in advanced plumbing systems, provides sensor operated flush valves for facilities demanding the finest sanitation equipment for busy restrooms. "Hands-free" technology effectively reduces unsanitary conditions from unflushed fixtures.

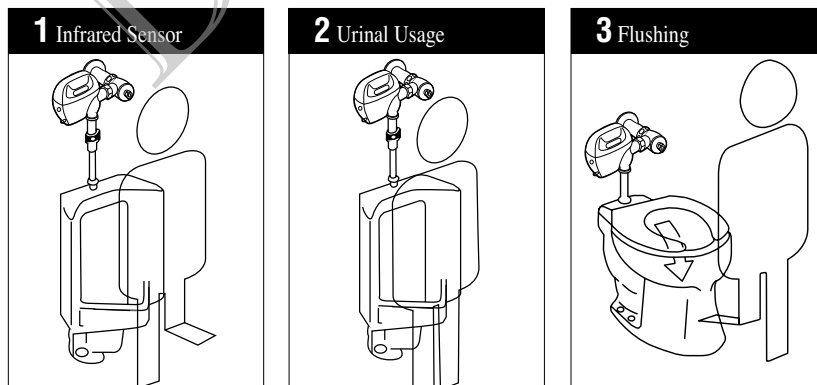
SUPERIOR PISTON VALVE

TOTO's piston valve technology is a marked improvement over traditional rubber diaphragm type valves. Longer piston travel and self-cleaning stainless steel debris screen reduce common problems such as continuous running and flooding. The piston seat itself will not warp or mis-seal thus, significantly reducing repair and maintenance costs. A micro-porous cup seal keeps the piston self-lubricated upon each activation with the incoming water supply.

FUZZY LOGIC MICROPROCESSOR

"Fuzzy logic" controlled flushing offers the ultimate water conservation without sacrificing performance. The new TOTO urinal flush valves utilize a fuzzy logic control microprocessor which measures the duration and frequency of use, and flushes an appropriate volume (0.5 – 1.0 gpf). In facilities with periods of frequent use, water conservation is maximized with the use of fuzzy logic technology.

OPERATING PROCEDURE A sanitary environment without using the hands.



NEUTRAL ROUGH-IN



TOTO's sensor flush valve has a neutral rough-in, it can be used as a right or left hand rough-in without modifications.



Reliance Commercial Line

Battery Powered (6V, DC) Sensor Urinal Flush Valve, Exposed - 1.0 GPF

SPECIFICATIONS

Product	TEUIDNCR-Valve Only, Left and Right Rough, Chrome Plated Finish TEUIDNCR-12 - Complete Set (3/4" V.B.), Left and Right Rough, Chrome Plate Finish TEUIDNCR -22 -Complete Set (1-1/4" V.B.), Left and Right Rough, Chrome Plated Finish
Power supply	Four AA alkaline batteries, 2-year life, based on 4000 cycles per month
Detection range	Self-adjusting to environment
Detection time	Factory setting at six (6) seconds minimum
Water supply pipe	3/4" NPT
Discharge quantity	Fuzzy logic adjusted flush volume at 28psi (0.5-1.0 GPF)
Urinal type	Low consumption wash down and jetted flush design urinals
Trap seal protection	Automatic flushing once every twenty-four (24) hours, if not used
Ambient temperature	32°-104°F (0°-40°C)
Supply water pressure	15 psi - 100 psi*
Warranty	Limited three (3) year warranty on all component parts. Details available upon request.
Listings	  ASSE 1037

These dimensions and specifications are subject to change without notice.

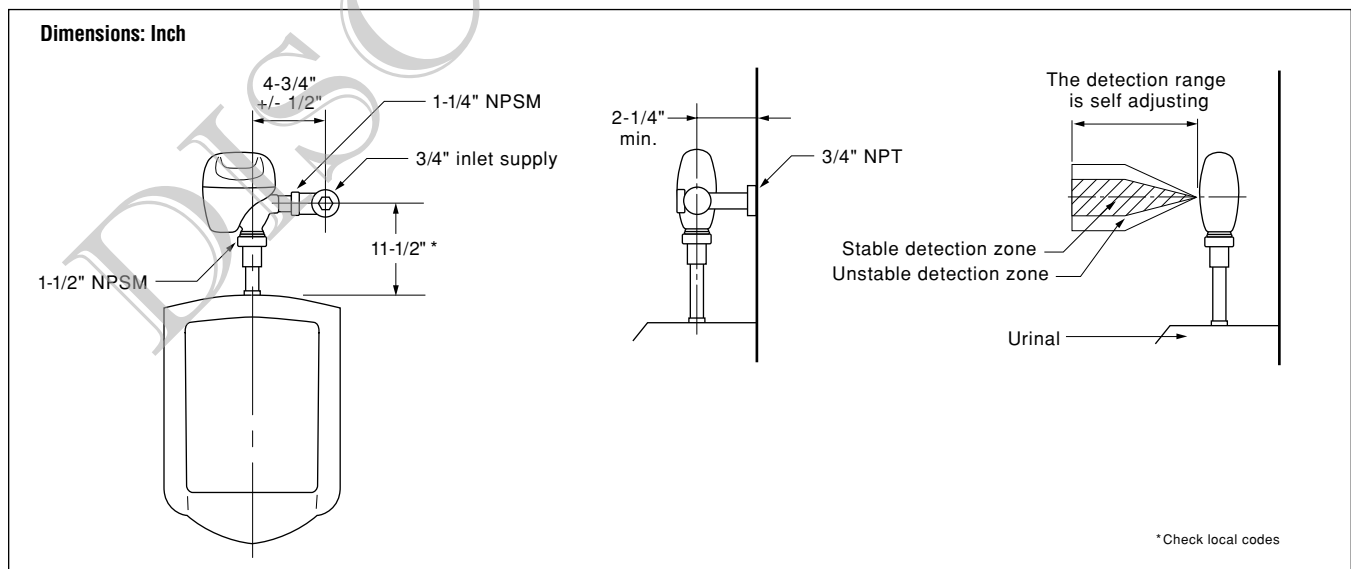
*Water pressures over 80 psi are not recommended for most plumbing fixtures.

SUGGESTED ENGINEERING SPECIFICATION:

TOTO Model No. _____
Automatic infrared sensor activated, bronze piston operated toilet flush valve. Heavy-duty zinc die cast cover with nickel-chrome finish. Vandal resistant hex head screws. 1.0 gpf. Four AA alkaline batteries

included providing a 2-year life at 4,000 cycles/month. Piston valve and solenoid with self-cleaning mechanism. Automatic flush every twenty four hours if not used. Angle stop and vacuum breaker included with accessories.

DIAGRAM:



TOTO®
Perfection by Design

TOTO U.S.A., INC. • 1155 Southern Road, Morrow, GA 30260
Tel. (770) 282-8686 • Fax. (770) 282-8701 • www.totousa.com
Printed in U.S.A. © TOTO LTD. 11/02 #H80025

Printed on recycled paper 

REV 11/02