

To be specified:

**Sensor Urinal Flush Valve**

- Complete Set, Right Rough, Satin Finish (14" x 12" Cover Plate)
  - Back Spud - TEU2ARS-11 (3/4" V.B.)
  - Back Spud - TEU2ARS-21 (1 1/4" V.B.)
- Complete Set, Left Rough, Satin Finish (14" x 12" Cover Plate)
  - Back Spud - TEU2ARS-11 (3/4" V.B.)
  - Back Spud - TEU2ARS-21 (1 1/4" V.B.)

Supplied with:

- Vacuum Breaker & Angle Stop Set - VB13RB-11
  - 3/4" Angle Stop - 10077t6
  - 3/4" Vacuum Breaker - 10075t6
  - Outlet Tube - TH559EDV171
  - Sweat Solder Kit - SJ1
- Vacuum Breaker & Angle Stop Set - VB13RB-21
  - 3/4" Angle Stop - 10077t6
  - 1 1/4" Vacuum Breaker - 10075t7
  - Outlet Tube - TH559EDV172
  - Sweat Solder Kit - SJ1

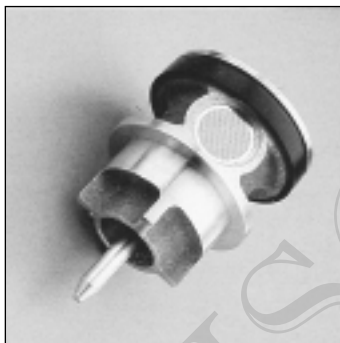
Optional Accessories:

- Transformer - TEF61RSV17

*Meets the American Disabilities Act Guidelines and ANSI A117.1 requirements for people with disabilities.*



TEU2ARS-11



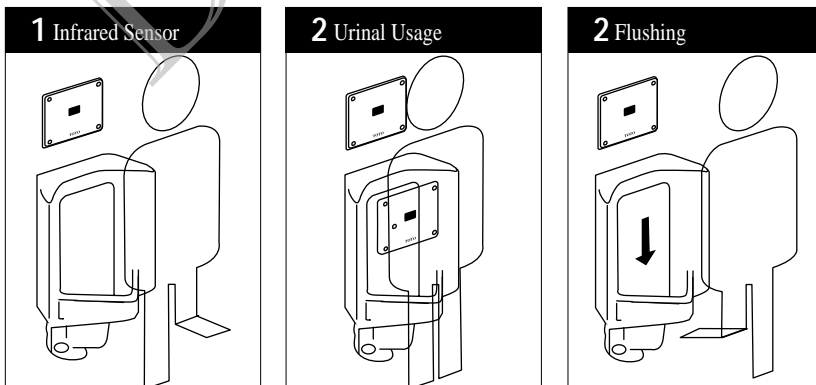
### AUTOMATIC FLUSHING SYSTEM

TOTO, the world leader in advanced plumbing systems, provides sensor operated flush valves for facilities demanding the finest sanitation equipment for busy restrooms. "Hands-free" technology effectively reduces unsanitary conditions from unflushed fixtures.

### SUPERIOR PISTON VALVE





TOTO's piston valve technology is a marked improvement over the traditional "rubber diaphragm" valve. Not only does the long piston travel and self-cleaning screen reduce common problems like sticking and clogging, but the piston itself will not warp or mis-seal, significantly reducing repair and maintenance cost.

### OPERATING PROCEDURE A sanitary environment without using the hands.



# AC Powered(24V,AC) Sensor Urinal Flush Valve, Concealed

## SPECIFICATIONS

<b>Product</b>	TEU2ARS-11 - Complete Set(3/4" V.B.), Right Rough, Back Spud, Satin Finish TEU2ARS-21 - Complete Set(1 1/4" V.B.), Right Rough, Back Spud, Satin Finish TEU2ALS-11 - Complete Set(3/4" V.B.), Left Rough, Back Spud, Satin Finish TEU2ALS-21 - Complete Set(1 1/4" V.B.), Left Rough, Back Spud, Satin Finish
<b>Power supply</b>	24V, AC: 60Hz (Rating 10W)
<b>Detection range</b>	Factory setting at 35 1/2". Adjustable from 20"-40"
<b>Detection time</b>	Factory setting at five (5) seconds
<b>Water supply</b>	3/4" NPT
<b>Discharge quantity</b>	Factory setting at 1 gallon per flush at 28psi
<b>Urinal type</b>	Wash down flush design
<b>Ambient temperature</b>	32°-104°F (0°-40°C)
<b>Supply water pressure</b>	Minimum required water pressure: 15psi(flowing) Maximum water pressure: 125psi
<b>Transformer</b>	TEF61RSV17 Class II-Overload protection provided. Finish with 4" x 4" mounting plate. Rating 100VA, primary voltage: 120V, AC. Maximum 10 units per transformer.
<b>Warranty</b>	Limited one (1) year warranty on all component parts. Details available upon request.
<b>Listings</b>	  City of Los Angeles   A.S.S.E. 1037

These dimensions and specifications are subject to change without notice.

## SUGGESTED ENGINEERING SPECIFICATION:

TOTO Model No. \_\_\_\_\_  
Automatic infrared sensor activated bronze piston operated toilet flush valve. Heavy duty stainless steel wall box and cover plate with brushed stainless finish. Vandal resistant mounting screws. 24 Volt AC power source. Electrical sensor

components separated from water body of valve and sealed in a waterproof compartment. Low consumption 1.0 gallons per flush. Stainless self-cleaning debris screen. Angle stop and vacuum breaker included.

## DIAGRAM:

