

To be specified:

Sensor Urinal Flush Valve

- Complete Set, Surface Mount, Satin Finish
 - Back Spud - TEU3ANS-11(3/4" V.B.)
 - Back Spud - TEU3ANS-21(1 1/4" V.B.)
- Complete Set, Flush Mount, Satin Finish
 - Back Spud - TEU4ANS-11(3/4" V.B.)
 - Back Spud - TEU4ANS-21(1 1/4" V.B.)
- Complete Set, Surface Mount, Off-White Finish
 - Back Spud - TEU3ANW-11(3/4" V.B.)
 - Back Spud - TEU3ANW-21(1 1/4" V.B.)
- Complete Set, Flush Mount, Off-White Finish
 - Back Spud - TEU4ANW-11(3/4" V.B.)
 - Back Spud - TEU4ANW-21(1 1/4" V.B.)

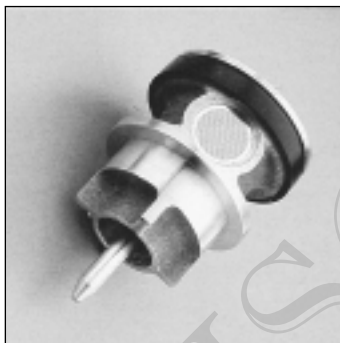
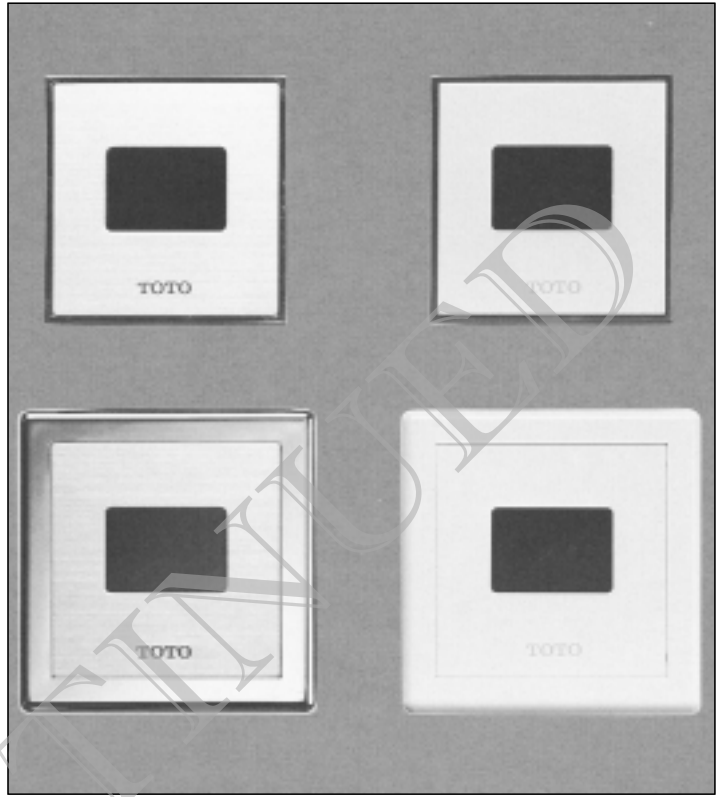
Supplied with:

- Vacuum Breaker & Angle Stop Set -VB13RB-11
 - 3/4" Angle Stop - 10077t6
 - 3/4" Vacuum Breaker - 10075t6
 - Outlet Tube - TH559EDV171
 - Sweat Solder Kit - SJ1
- Vacuum Breaker & Angle Stop Set -VB13RB-21
 - 3/4" Angle Stop - 10077t6
 - 1 1/4" Vacuum Breaker - 10075t7
 - Outlet Tube - TH559EDV172
 - Sweat Solder Kit - SJ1

Optional Accessories:

- Transformer - TEF61RSV17

Meets the American Disabilities Act Guidelines and ANSI A117.1 requirements for people with disabilities.



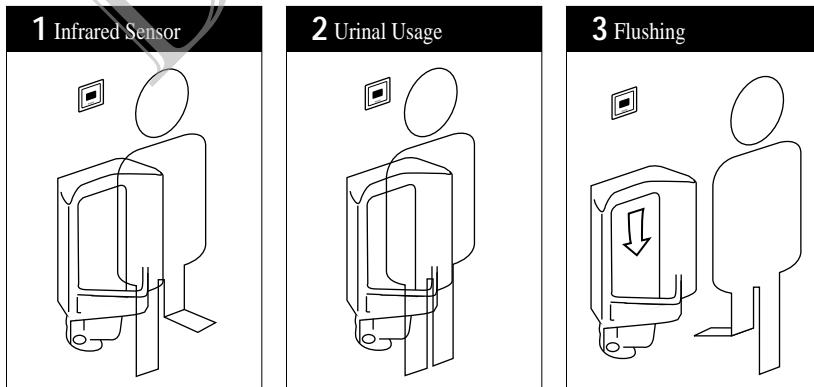
AUTOMATIC FLUSHING SYSTEM

TOTO, the world leader in advanced plumbing systems, provides sensor operated flush valves for facilities demanding the finest sanitation equipment for busy restrooms. "Hands-free" technology effectively reduces unsanitary conditions from unflushed fixtures.

SUPERIOR PISTON VALVE


TOTO's piston valve technology is a marked improvement over the traditional "rubber diaphragm" valve. Not only does the long piston travel and self-cleaning screen reduce common problems like sticking and clogging, but the piston itself will not warp or mis-seal, significantly reducing repair and maintenance cost.

OPERATING PROCEDURE A sanitary environment without using the hands.



AC Powered(24V,AC) Sensor Urinal Flush Valve, Concealed (4"x4")

SPECIFICATIONS

Product	TEU3ANS-11 - Complete Set(3/4" V.B.), Surface Mount, Back Spud, Satin Finish TEU3ANS-21 - Complete Set(3/4" V.B.), Surface Mount, Back Spud, Satin Finish TEU4ANS-11 - Complete Set(1 1/4" V.B.), Flush Mount, Back Spud, Satin Finish TEU4ANS-21 - Complete Set(1 1/4" V.B.), Flush Mount, Back Spud, Satin Finish TEU3ANW-11 - Complete Set(3/4" V.B.), Surface Mount, Back Spud, Off-White Finish TEU3ANW-21 - Complete Set(3/4" V.B.), Surface Mount, Back Spud, Off-White Finish TEU4ANW-11 - Complete Set(1 1/4" V.B.), Flush Mount, Back Spud, Off-White Finish TEU4ANW-21 - Complete Set(1 1/4" V.B.), Flush Mount, Back Spud, Off-White Finish
Power supply	24V, AC: 60Hz (Rating 10W)
Detection range	Factory setting at 35 1/2". Adjustable from 20"-40"
Detection time	Factory setting at four (4) seconds.
Water supply	3/4" NPT
Discharge quantity	Factory setting at 1 gallon per flush at 28psi
Urinal type	Wash down flush design
Ambient temperature	32°-104°F (0°-40°C)
Supply water pressure	Minimum required water pressure: 15psi(flowing) Maximum water pressure: 125psi
Transformer	TEF61RSV17 Class II-Overload protection provided. Finish with 4" x 4" mounting plate. Rating 100VA, primary voltage: 120V, AC. Maximum 10 units per transformer.
Warranty	Limited one (1) year warranty on all component parts. Details available upon request.
Listings	  City of Los Angeles   A.S.S.E. 1037

These dimensions and specifications are subject to change without notice.

SUGGESTED ENGINEERING SPECIFICATION:

TOTO Model No. _____
Automatic infrared sensor activated bronze piston operated urinal flush valve. Heavy duty stainless steel cover plate with satin or off-white finish. Vandal resistant mounting screws. 24 volt AC power source.

Electrical sensor components separated from water body of valve and sealed in a waterproof compartment. Low consumption 1.0 gallon per flush. Stainless self-cleaning debris screen. Angle stop and vacuum breaker included.

DIAGRAM:

